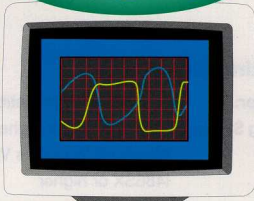


Scope Data Management Software

Digital Oscilloscope ↔ Personal Computer

Display



Transfer

Control



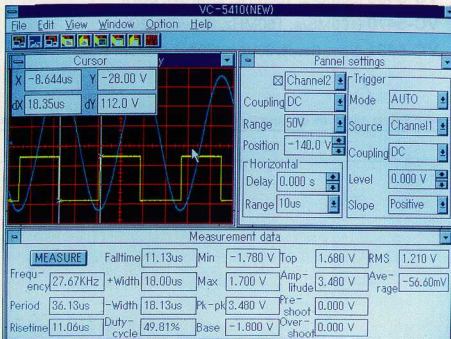
File

Conversion

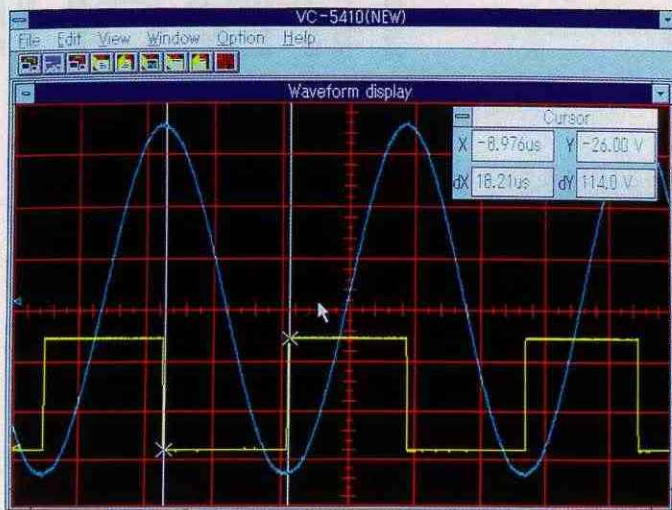
Export to other applications

Word

Excel



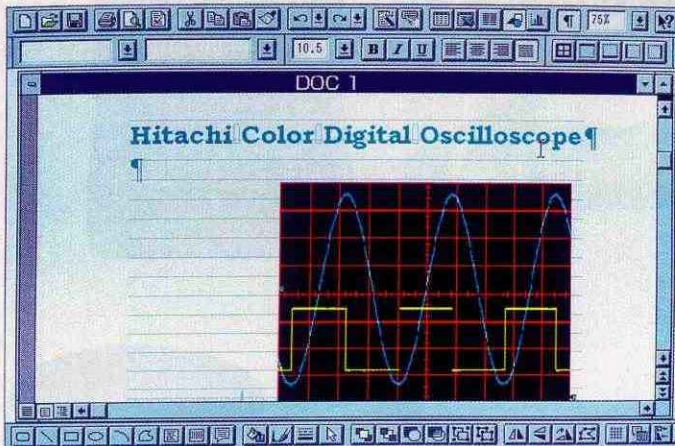
- Control of basic oscilloscope settings from a personal computer.
- Transfer and display (expandable) of oscilloscope waveform data and cursor measurements.
- Transfer and display of 17 waveform parameters.
- Conversion (TIFF, BMP, PCX) and storage of displayed waveform.
- Conversion and storage of waveform data and setting values in text format files (CSV, TXT, PRN, LOTUS 1-2-3).
- Storage and recall/setup of oscilloscope setting conditions.



Waveform only display

	A	B	C	D
7	NUM_SAMPS		2048	
8	INTERVAL		6.67E-08	
9	VERT_UNITS	Volts		
10	HORZ_UNITS	Sec		
11	HORZ_OFFSET		0.00E+00	
12	HORZ_REFERENCE		1024	
13	VERT_OFFSET		1.20E-01	
14	VERT_REFERENCE		128	
15	VERT_INTERVAL		2.00E-02	
16	COMMENT	Signal acquired by Channel 1 of Hitachi VC-5410		
17	DATA			
18		-0.000068	1.36	
19		-0.000068	1.38	
20		-0.000068	1.4	

Example of opening a text-format file with Microsoft Excel



Example of importing an image file to Microsoft Word file

Operating Environment

- Computer:** IBM PC-AT Compatible
- Operating System:** MS-DOS 5.0 or higher
Microsoft Windows Version 3.1
- CPU:** i486SX or higher
- RAM:** 8MB or more
- Hard Disk :** 4MB or more
- Interface:** RS-232C
- Display:** VGA (640x480 dots) or better
XGA(1024x768 dots) or greater recommended

Applicable Models

B5 Size, Notebook-type Color Digital Oscilloscope

- VC-5410** (15MS/s, 20MHz, 2kw/CH, 2CH)
- VC-5430** (30MS/s, 50MHz, 2kw/CH, 2CH)
- VC-5460** (60MS/s, 150MHz, 2kw/CH, 2CH)
- VC-5470** (100MS/s, 150MHz, 8kw/CH, 2CH)
- VC-5431** (Video Scope, 30MS/s, 50MHz, 2kw/CH, 2CH)

Specifications and outer appearance are subject to change without prior notice

HITACHI DENSHI (Europa) GmbH

Weiskircher Str. 88
63110 Rodgau, Germany
T. 06106-6992-0
Fax 06106-16906

http://ourworld.compuserve.com/homepages/Hitachi_Denshi
E-Mail: 100443.2014@compuserve.com

Windows 3.1, Microsoft, Windows, Microsoft Word and Excel are registered trademarks of the Microsoft Corporation in the US.

IBM and PC-AT are registered trademarks of the IBM Corporation in the US.

Lotus 1-2-3 is a registered trademark of the Lotus Corporation in the US.

i486 is a trademark of Intel in the US.